

Discharge nozzle

P/N STV-NZxxx

DT-STV-NzxxxE Rev 1.1
Effective: July 2019

FEATURES

- Full size in range
- All nozzle come with escutcheon

- Brass orifice calculate by software

DESCRIPTION

The discharge nozzles are used to discharge extinguishing agent inside the hazard area as homogeneously as possible to achieve efficient extinguishing.

The discharge nozzle is available in two types with varied sizes each intended for a specific area of hazard area. The 360° radial nozzles discharge gas uniformly in a 360° circular section plane. 180° radial nozzles do so in half of this circle. The 180° nozzles are usually for installing along the walls of the hazard while the 360° ones are installed in the middle of the protected room.

The discharge nozzle STV-NZxxx can be used for SNS IG-100 system or SFS FM-200 system.

INSTALLATION

Discharge nozzles are screwed onto the discharge piping in a vertical position.

The nozzle come with escutcheon used to completely cover the gap or clearance between the hole at the ceiling and the discharge pipe. Install the nozzle escutcheon by inserting it through the pipe tip prior to installing the discharge nozzle.

SPECIFICATION

Material	Body - Aluminum A6061 Orifice – Đồng C3604
Nozzle 360°	16 orifices at 2 level
Nozzle 180°	180 deg. Window

LIMITATION FOR USING WITH FM-200 SYSTEM

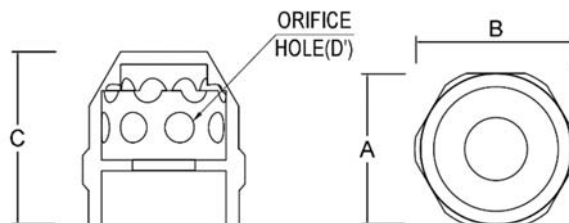
Min. Discharge pressure	5 bar
Maximum coverage area	201.64 m ² (14,2m x 14.2m)
Maximum height for FM-200 system	4.5 m

LIMITATION FOR USING WITH IG-100 SYSTEM

Min. Discharge pressure	23.5 bar
Maximum coverage area	196 m ² (14mx14m)
Maximum height for IG-100 system	6.0 m

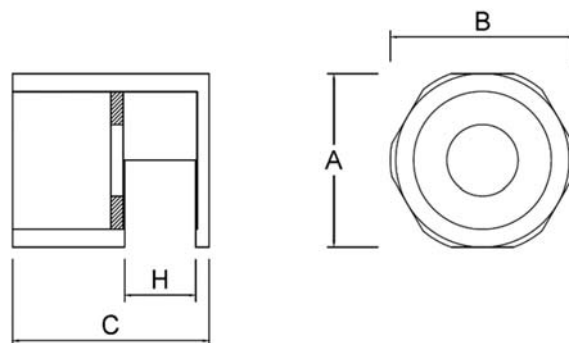
The part number for ordering the discharge nozzle is STV-NZ2xx (for 360° nozzle) and STV-NZ1xx (for 180° nozzle) and xx stand for size of nozzle

360° discharge nozzle dimensions



P/N	Size	A	B	C	D
STV-NZ250	DN50	70.6	75.0	80.0	14.0
STV-NZ240	DN40	60.0	65.0	70.0	10.9
STV-NZ232	DN32	52.0	57.0	65.0	9.3
STV-NZ225	DN25	42.0	45.6	55.0	7.1
STV-NZ220	DN20	35.0	40.4	45.0	5.6
STV-NZ215	DN15	28.0	32.0	40.0	4.2

180° discharge nozzle dimensions



P/N	Size	A	B	C	H
STV-NZ150	DN50	70.6	75.0	80.0	29.0
STV-NZ140	DN40	60.0	65.0	70.0	23.0
STV-NZ132	DN32	52.0	57.0	65.0	20.0
STV-NZ125	DN25	42.0	45.6	55.0	15.0
STV-NZ120	DN20	35.0	40.4	45.0	12.0
STV-NZ115	DN15	28.0	32.0	40.0	9.0

This literature is provided for informational purposes only. S-TECVINA Ltd., assumes no responsibility for the product's suitability for a particular application. The product must be properly applied to work correctly. If you need more information on this product, or if you have a particular problem or question, contact S-TECVINA Ltd.,

FM-200 is a registered trademark of The Chemours Company FC, LLC. 1007 Market Street Wilmington, DE19899 United States of America (USA)

S-TECVINA Ltd.,
Dong Van IV IZ, Ha Nam, Vietnam
Phone: (+84) 0226 2460 114
www.stecvina.com